

Type A1-T Rubber Expansion Joint

Standard model single-arch rubber expansion joint composed of single- or multi-layer rubber bellow with tie rods system, for mounting with swivel flanges directly on the pipeline.

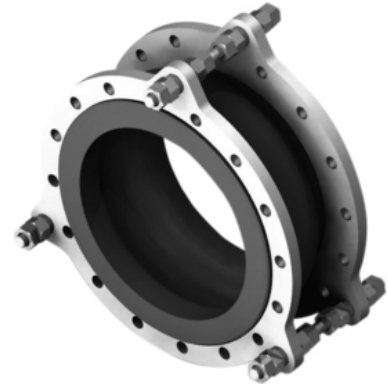
Available in various rubber qualities depending on the flow media, custom install lengths and different standards and materials for the flanges. Optional support ring for vacuum applications is available on request.

For detailed technical specifications on Type A1T rubber expansion joints please check the following table and documents or [contact us](#).

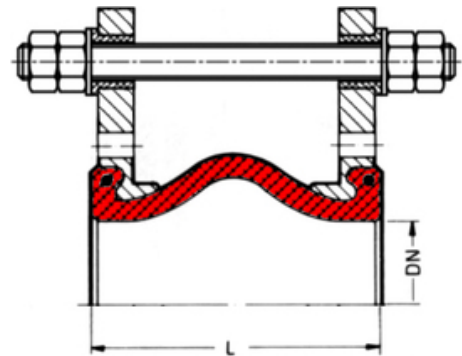
▶ Features

- ✔ high flexibility, universal movements
- ✔ simple installation with flanges
- ✔ various rubber qualities
- ✔ suitable for vacuum
- ✔ tie-rods system

▶ Technical Specifications



Note | Type A1T (with tie rods) - Rubber Expansion Joint | 3D view



Note | Type A1T (with tie rods) - Rubber Expansion Joint | dimensional sketch

Type	Rubber
Series	A1-T
Couplings	flanges
Size/Range	DN20-DN2000
Pressure	up to PN16
Thrust Restraint	yes
Axial	yes *
Lateral	yes *
Angular	yes *

* acc. to individual design or standard program

** other pressure class DIN/ANSI on request

▶ Rubber Quality Chart

Rubber Quality	Mark	Common Applications	Max. Allowed Temperature
NEOPRENE	▼	water	70°C
EPDM	▼	warm / industrial water	90°C
EPDM-SP	▼	hot water / heating systems	110°C
NITRIL	▼	oils	80°C
NITRIL	▽	food grade applications	80°C
HYPALON	▼	acids	80°C
BUTYL	▼	potable water	90°C
VITON	▼	strong acids	90°C

* for proper identification of the required rubber quality, please check our complete Rubber Compatibility Chart

▶ Standard Program

Nominal Diameter [mm]	Overall Length [mm]	Movements		
		Axial [±-mm]	Lateral [±-mm]	Angular [±-deg]
20	130	30	30	35
25	130	30	30	35
32	130	30	30	35
40	130	30	30	35
50	130	30	30	35
65	130	30	30	30
80	130	30	30	35
100	130	30	30	25
125	130	30	30	25
150	130	30	30	20
200	130	30	30	15
250	130	30	30	10
300	130	30	30	10
350	130	30	30	10

* for sizes above DN350 please ask for individual quotation

** other lengths available on request.

