

## Type 54 Fabric Expansion Joint

Standard model bellow fabric expansion joint composed of single- or multi-layer fabric with preformed convolution, available in cylindrical or rectangular shape for mounting with mixed couplings.

This expansion joint allows connecting non-identical cross-sections by flange and clamp couplings. Preformed convolution bellow is used to achieve large expansion compensation. Inner stainless steel rings are used for structure stability and/or as an anchoring point.

For detailed technical specifications on Type 54 fabric expansion joints please check the following table and documents or [contact us](#).

### ► Features

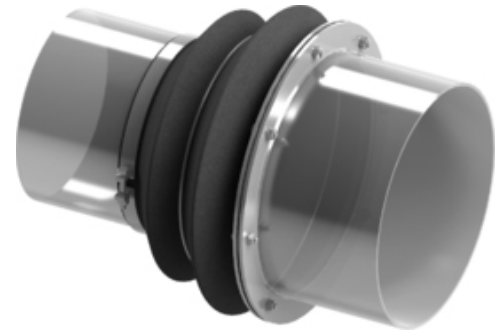
- ✔ compensate large movements and vibrations
- ✔ mixed couplings installment
- ✔ preformed bellow structure
- ✔ identical and different cross-sections
- ✔ anchoring points may be required

### ► Technical Specifications

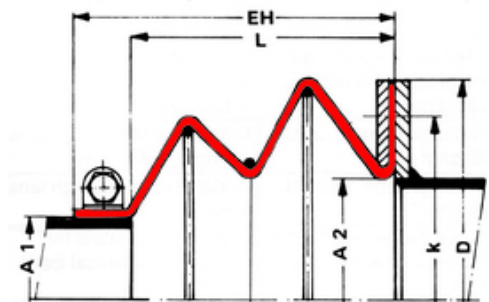
Type	Fabric
Series	W 54
Couplings	clamp/flange
Size/Range	by request *
Pressure	up to 500 mbars **
Axial	up to 70% of L
Lateral	up to 25% of L
Angular	acc. to designsheet

\* limited by manufacturing technology

\*\* special constructions for higher pressure may be possible



Note | Type 54 - Fabric Expansion Joint | 3D view



Note | Type 54 - Fabric Expansion Joint | dimensional sketch