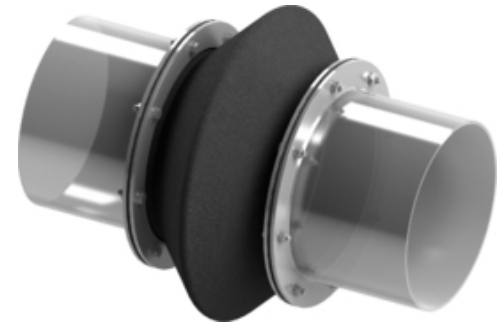


Type 33 Fabric Expansion Joint

Standard model bellow fabric expansion joint composed of single- or multi-layer fabric with preformed convolution, available in cylindrical or rectangular shape for mounting with flanges on the pipeline.

Preformed convolution bellow is used to achieve large expansion compensation with or without internal and external pressure. Inner stainless steel rings are used for structure stability and/or as an anchoring point.

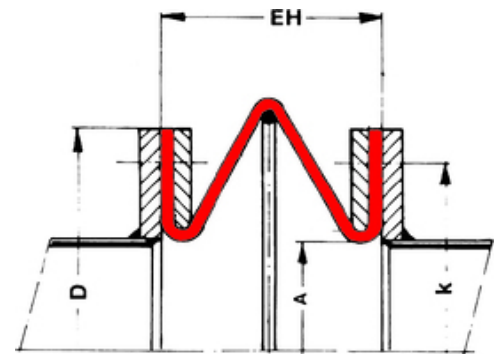
For detailed technical specifications on Type 33 fabric expansion joints please check the following table and documents or [contact us](#).



Note | Type 33 - Fabric Expansion Joint | 3D view

► Features

- ✓ compensate large movements and vibrations
- ✓ simple installment with flanges
- ✓ U-design construction
- ✓ preformed bellow structure
- ✓ anchoring points may be required



Note | Type 33 - Fabric Expansion Joint | dimensional sketch

► Technical Specifications

Type	Fabric
Series	W 33
Couplings	flanges
Size/Range	by request *
Pressure	up to 500 mbars **
Axial	up to 70% of EH
Lateral	up to 25% of EH
Angular	acc. to designsheet

* limited by manufacturing technology

** special constructions for higher pressure may be possible