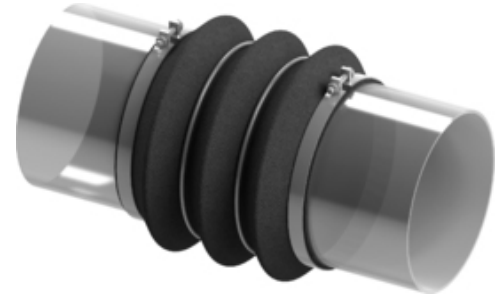


Type 14 Fabric Expansion Joint

Standard model bellow fabric expansion joint composed of single- or multi-layer fabric, available in cylindrical or rectangular shape for mounting with clamps directly on the pipeline.

Preformed convolution bellow is used to achieve large expansion compensation with or without internal and external pressure. Inner stainless steel rings are used for structure stability and/or as an anchoring point.

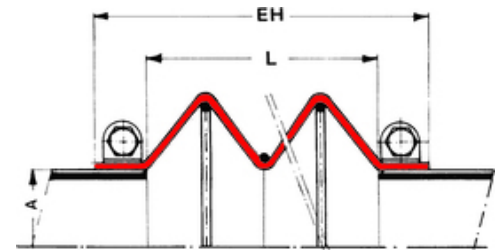
For detailed technical specifications on Type 14 fabric expansion joints please check the following table and documents or [contact us](#).



Note | Type 14 - Fabric Expansion Joint | 3D view

▶ Features

- ✔ compensate large movements and vibrations
- ✔ easy and quick installment with clamps
- ✔ preformed bellow structure
- ✔ anchoring points may be required



Note | Type 14 - Fabric Expansion Joint | dimensional sketch

▶ Technical Specifications

Type	Fabric
Series	W 14
Couplings	clamps
Size/Range	by request *
Pressure	up to 500 mbars **
Axial	up to 50% of L
Lateral	up to 25% of L
Angular	acc. to designsheet

* limited by manufacturing technology

** special constructions for higher pressure may be possible